



CWQE Workshop – High Tunnels and Stormwater Management

Sally Holbert, RLA

Project Manager for the Center of Water
Quality Excellence





Aging Infrastructure - Residential

Erosive energy of stormwater



UPSTREAM
UNMANAGED
STORMWATER –

Urbanized Area
flowing
downstream to
tributary of
Barshinger Creek





Siting of High Tunnels



Evaluation of Alternatives Stormwater Practices



Stream Restoration Funding and Education

HOA and Developer Customers



Aging Infrastructure - Agriculture

Workshop Agenda Speakers & Panelists

High Tunnels

Ag Specialist Jeff
Stolzfoos, Penn
State Ext

HB 1478

Rep Dave
Zimmerman,
Lancaster County

ACRE

Atty Brook Duer,
PSU



High Tunnels, Drainage and Stormwater Management

Sally Holbert, RLA

Project Manager for the Center of Water Quality Excellence





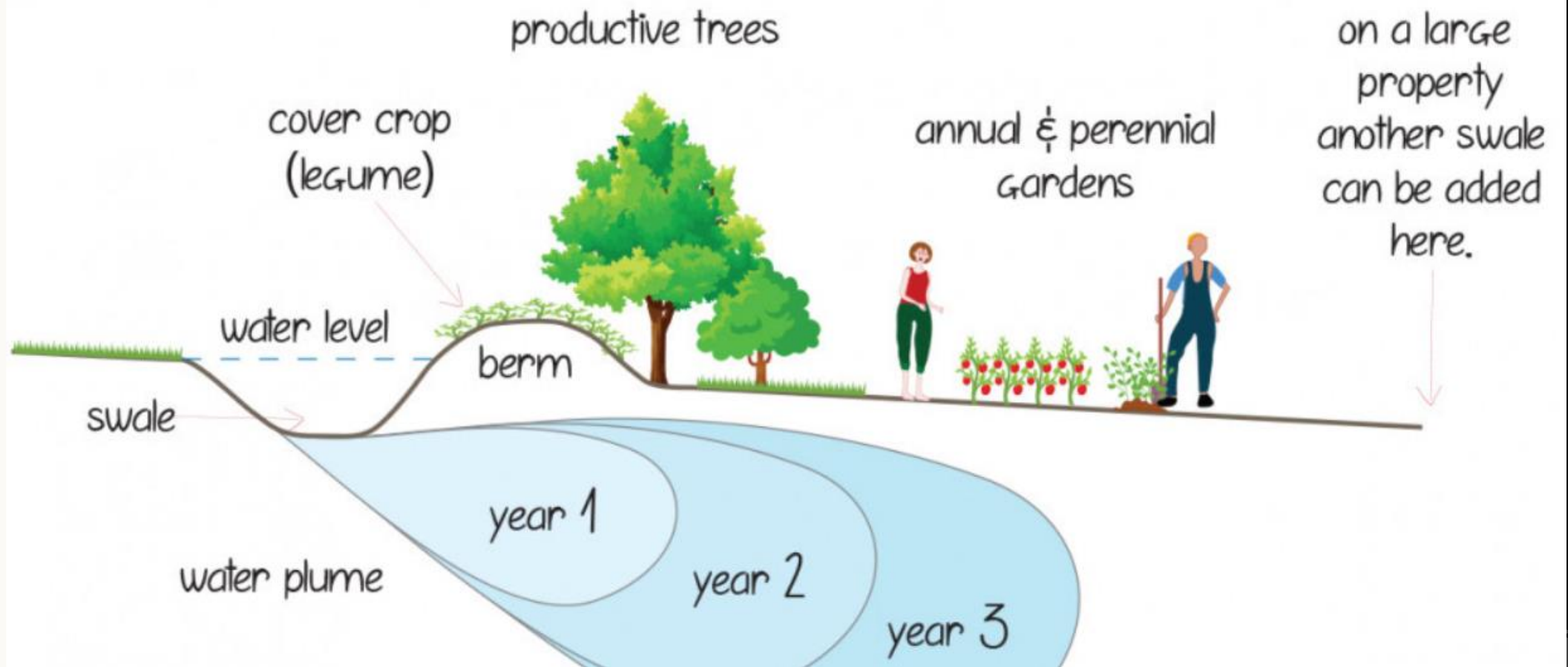
Riparian Buffer

Stream Restoration



Swales on Contour

Swales and Berms

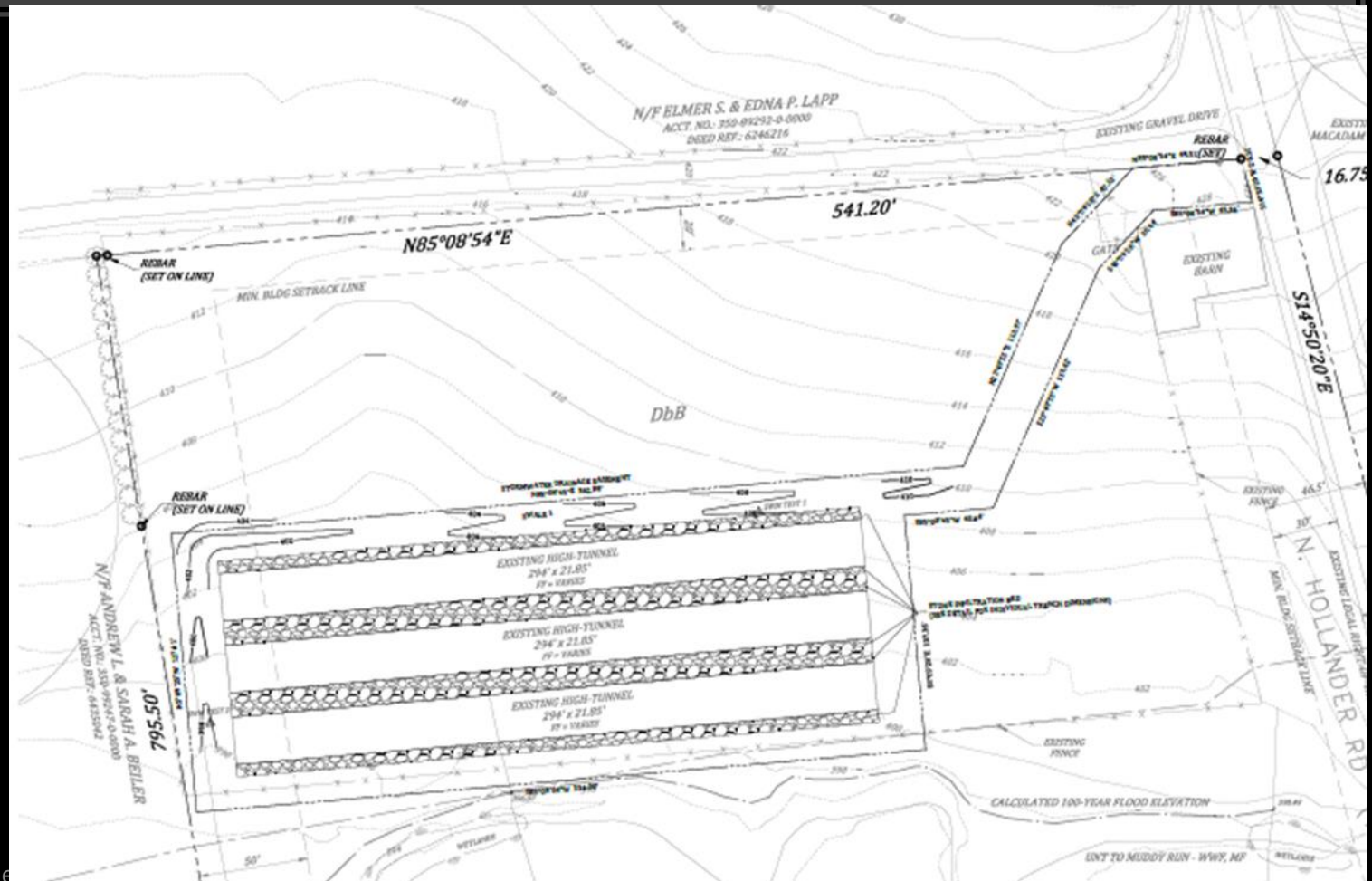


Swale and Berm

Low Impact Practices – Swale Berm and Plants

Evaluation of Alternatives Stormwater Practices

16. THE STORMWATER MANAGEMENT DESIGN ASSUMES THE INSTALLATION OF 19,275 SQUARE FEET OF IMPERVIOUS SURFACES, ALL OF WHICH IS REQUIRED TO BE COLLECTED BY THE INFILTRATION BEDS. ANY ADDITIONAL IMPERVIOUS SURFACES BEYOND THESE AMOUNTS MUST FIRST BE APPROVED BY LEACOCK TOWNSHIP PRIOR TO INSTALLATION.
17. NO TREE OR SHRUB WHICH MAY OBTAIN A HEIGHT OF 20-FEET OR MORE SHALL BE PLANTED OR ALLOWED TO GROW WITHIN 10-FEET OF ANY LOT LINE WHICH ABUTS AN AREA WITHIN AN AGRICULTURAL ZONE.
18. LEACOCK TOWNSHIP SHALL BE CONTACTED SHOULD ANY CHANGES BE PROPOSED TO THE APPROVED PLANS, CONSTRUCTION SEQUENCE, OR IF SINKHOLES ARE ENCOUNTERED.





Opportunity for Riparian Buffer



This image shows the previous season's tomato remnants (left) and a well-established cover crop. These tunnels will be flipped to cover the center areas that are currently not under cover.



Cover Cropping between Tunnels

Cover Crops and Riparian Buffer



Site Analysis for High Tunnels